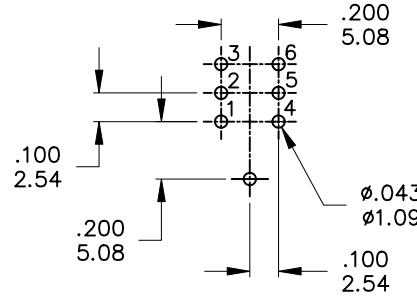


PANEL MOUNTING



P.C. MOUNTING

| Model No. | POS.1 | POS.2 | POS.3 |
|-------------|---------|-------|---------|
| | | | |
| 2MD1 | ON | NONE | ON |
| Term. Comm. | 2-3,5-6 | N/A | 2-1,5-4 |
| SCHEMATIC | | | |

SWITCH FUNCTION

| | PART NO. | PART NAME | QTY |
|---|----------|-----------------|-----|
| 1 | MNU-2M01 | 10-48 INCH NUTS | 2 |
| 2 | MNU-2M03 | LOCKING WASHER | 1 |

FILE NAME: HARDWARE-0003

SPECIFICATIONS

MECHANICAL LIFE: 30,000 make-and-break cycles.
CONTACT RESISTANCE: 20 mΩ max. initial @ 2-4VDC
 100mA for both silver and gold plated contacts.
INSULATION RESISTANCE: 1,000 MΩ min.
DIELECTRIC STRENGTH: 1,000 Vrms min. @ sea level.
OPERATING TEMPERATURE: -30°C to 85°C.

MATERIALS

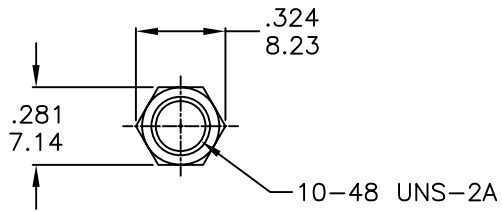
CASE - Diallyl phthalate(DAP)(UL94V-0)
ACTUATOR - Brass, chrome plated
BUSHING - Brass, nickel plated
HOUSING - Stainless Steel
SWITCH SUPPORT - Brass, tin plated.
TERMINALS/CONTACT - Brass, with Silver or gold plated.
RoHS - 2002/95/EC

| | CONTACT PLATING | TERMINAL PLATING | RATINGS |
|---|------------------|--------------------------------|--|
| Q | Silver | Q = Silver | 3 Amps @120 VAC or 28VDC 1 Amps @250 VAC |
| S | | S = Silver, pure-tin | |
| C | | C = Gold over silver | |
| K | Gold over Silver | K = Gold over silver, pure-tin | 0.4 Volt-Amps(VA) max. @20V max. (AC or DC) |
| R | | R = Gold | |
| G | Gold | G = Gold, pure-tin | |

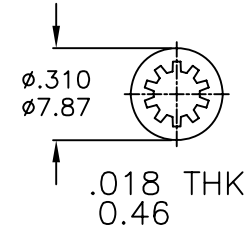
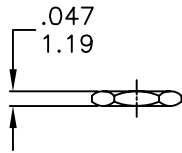
| | 符號 | 原尺寸 | 修改後尺寸 | 變更日期 |
|---|----|-----|-------|------|
| 1 | Ⓐ | | | |
| 2 | Ⓑ | | | |
| 3 | Ⓒ | | | |
| 4 | Ⓓ | | | |
| 5 | Ⓔ | | | |

SCALE (比例): 3:2
TOLERANCE (公差):
 0.00 mm ± 0.25mm
 0.0 mm ± 0.40mm
ANGULAR: ± 5°
FILE NAME: 2MDP0393

| TITLE 圖名 | Sub - Miniature Toggle Switches | | | SIZE 圖紙 | A4 |
|---------------|---------------------------------|---------|-----------------|----------|---------|
| DWG NO. 圖號 | 2MD1T3B1M7QES-5 | | | UNIT 單位 | inch mm |
| REV. 版本 | A | DATE 日期 | MAY - 06 - 2011 | SHEET 張數 | 1 of 1 |
| CHECKED BY 審核 | RICHARD | | DRAWN BY 製圖 | IRENE | |



MNU-2M01



MNU-2M03

| | MATERIAL NO. | PART NAME | Q'TY |
|---|--------------|-----------------|------|
| 1 | MNU-2M01 | 10-48 INCH NUTS | 2 |
| 2 | MNU-2M03 | LOCKING WASHER | 1 |

| 符號 | 原尺寸 | 修改後尺寸 | 變更日期 | SCALE (比例): 3:2 | TITLE 圖名 | HARDWARE | | | SIZE 圖紙 | A4 | |
|----|-----|-------|------|--|------------------|-----------------------|------------|-----------------|------------|-------------|--------|
| 1 | (A) | | | TOLERANCE (公差): 0.00 mm \pm 0.25mm 0.0 mm \pm 0.40mm ANGULAR : $\pm 5^\circ$ FILE NAME : HARDWARE-0003 | DWG NO. 圖號 | 10-48 IN BUSHING PART | | | UNIT 單位 | inch mm | |
| 2 | (B) | | | | REV. 版本 | A | DATE 日期 | DEC - 27 - 2007 | | SHEET 張數 | 1 of 1 |
| 3 | (C) | | | | CHECKED BY 審核 | RICHARD | | DRAWN BY 製圖 | FION | | |
| 4 | (D) | | | | | | | | | | |
| 5 | (E) | | | | | | | | | | |