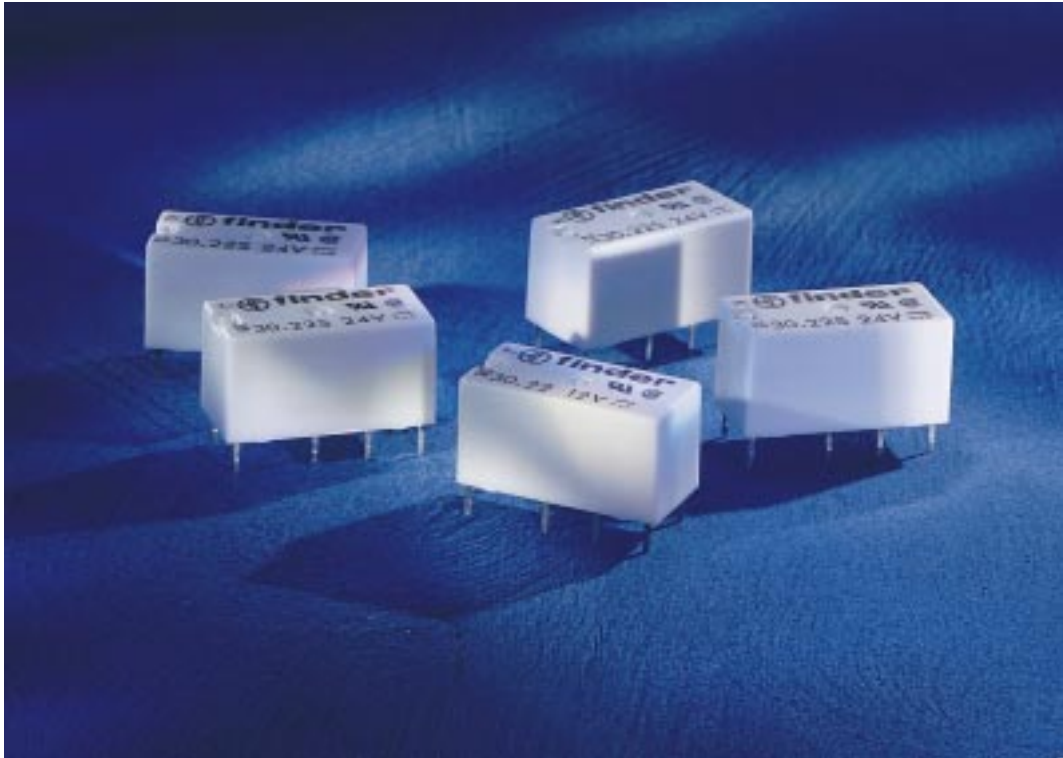
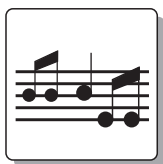


30 SERIES SUBMINIATURE D.I.L. RELAYS 1.25 A



- a range of sealed subminiature D.I.L. relays with 2 CO (DPDT) contacts
- P.C.B. mount
- DC or sensitive coil versions available
- approvals (according to type): CSA, UL

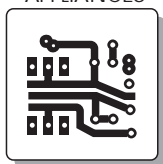
HI - FI SYSTEMS



COMPUTERS



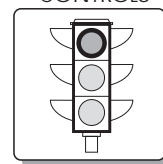
ELECTRONIC
APPLIANCES



TELEPHONES AND
COMMUNICATIONS

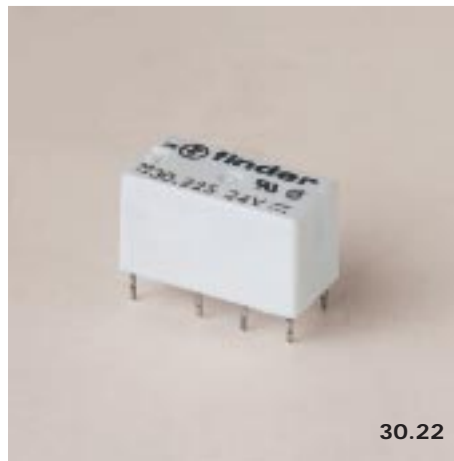


TRAFFIC LIGHT
CONTROLS



ALARM
SYSTEMS



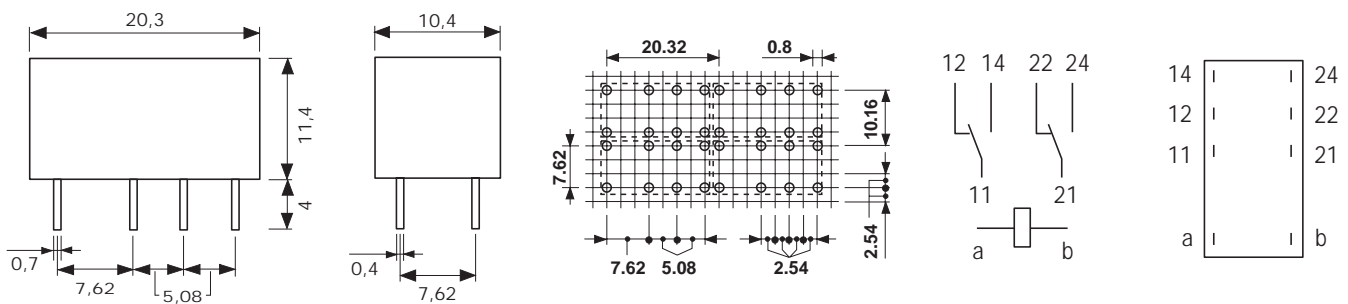


30.22



D.I.L. RELAY

- TYPE 30.22** 2 CO (DPDT) sealed version
TYPE 30.22 S 2 CO (DPDT) sensitive sealed version
 - tin plated connections for P.C.B.
 - standard contact material: Ag + Au
 - ordering information: see page 3



TECHNICAL DATA

DIELECTRIC STRENGTH tested at: leakage current ≤ 10 mA for 1 min at 50 Hz	between coil and contacts	1000 V
	between open contacts	500 V
	between adjacent contacts	1000 V
INSULATION RESISTANCE	≥ 10 · 10 ³ MΩ	
MAX SWITCHING FREQUENCY - without load - at rated load	36000 cycles/h 1800 cycles/h	
AMBIENT TEMPERATURE	- 40 to 70 °C	
MECHANICAL LIFE	10 · 10 ⁶ cycles	
PROTECTION CATEGORY OF ENCLOSURES	IP 67	
OPERATE AND RELEASE TIME - pick-up time (from 0 to U _N) - drop-out time (from U _N to 0)	≤ 15 ms (including contact bounce) ≤ 10 ms (including contact bounce)	
TYPE OF DUTY	continuous	
TYPE OF RELAY	all - or - nothing	

CONTACT SPECIFICATION

NOMINAL RATE IN AC1	125 VA
RATED CURRENT	1.25 A
MAXIMUM CARRYING CURRENT TO 1 CONTACT	2 A
MAXIMUM SWITCHING VOLTAGE	250 V AC
MINIMUM SWITCHING CURRENT	1 mA
MINIMUM SWITCHING VOLTAGE	100 mV
CONTACT RESISTANCE: - initial	≤ 50 mΩ
STANDARD CONTACT MATERIAL	Ag + Pd
ELECTRICAL LIFE: LOAD LIFE: - 250 V 125 VA (AC1): ≥ 100 · 10 ³ cycles - 24 V 30 W (DC1): ≥ 2 · 10 ⁶ cycles	

COIL SPECIFICATION

VERSIONS:

DC - direct current

S sensitive - DC current with low consumption

DC VERSION DATA (R values relate to +20°C.

Tolerance of R and I values ±10%.)

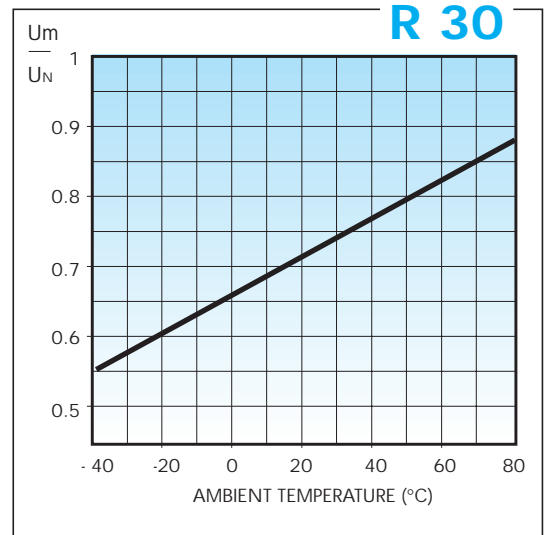
rated voltage U_N (V)	operating range (V)		resistance R (Ω)	current absorption I at U_N (mA)
	U min	U max		
5	3.5	7.5	62	80
6	4.2	9	90	67
9	6.3	13.5	203	44
12	8.4	18.4	360	33
24	16.8	36	1440	17
48	33.6	65	5760	8.3

SENSITIVE DC VERSION DATA (R values relate to +20°C.

Tolerance of R and I values ±10%.)

rated voltage U_N (V)	operating range (V)		resistance R (Ω)	current absorption I at U_N (mA)
	U min	U max		
5	3.5	7.5	125	40
6	4.2	9	180	33
9	6.3	13.5	405	22
12	8.4	18.4	720	16
24	16.8	36	2880	8.3
48	33.6	65	11520	4.1

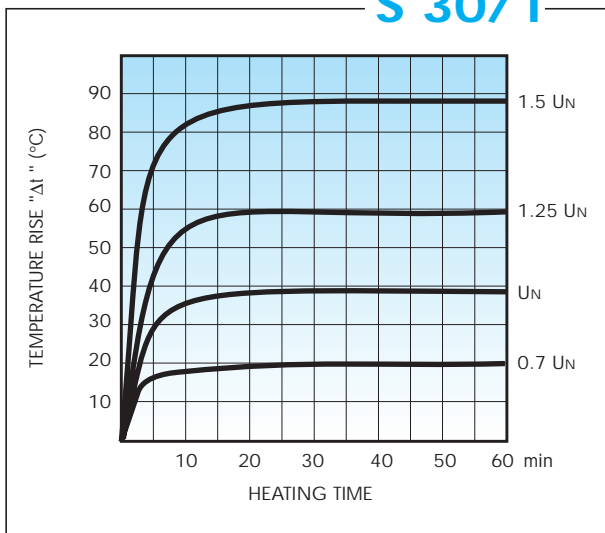
	DC	S
RATED POWER	0.4 W	0.2 W
MINIMUM POWER	0.2 W	0.1 W
OPERATING RANGE	see table below	
HOLDING VOLTAGE	$\leq 0.4 U_N$	$\leq 0.4 U_N$
MUST DROP-OUT VOLTAGE	$\geq 0.1 U_N$	$\geq 0.1 U_N$



Min pick-up voltage vs ambient temperature.

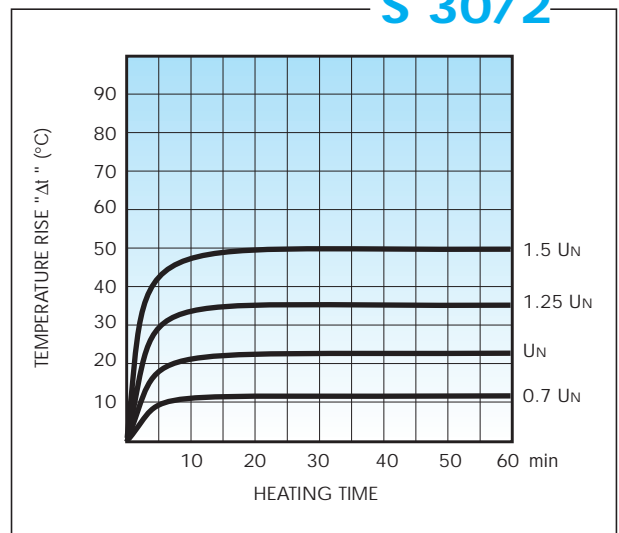
U_m = pick-up voltage U_N = rated voltage

S 30/1



Temperature rise " Δt " vs applied voltage. DC coils.

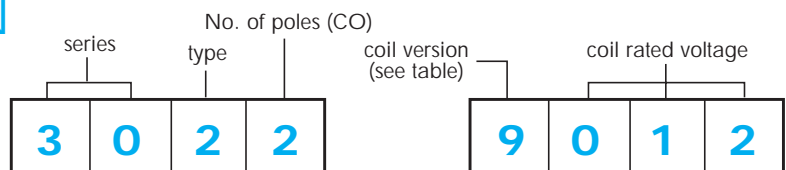
S 30/2



Temperature rise " Δt " vs applied voltage. DC sensitive coils.

ORDERING INFORMATION

Example: a 30 series P.C.B. relay with 2 CO (DPDT) contacts, coil rated at 12 V DC.



COIL VERSION

Code	Coil types	
9	DC	Direct current
7	S	Sensitive - direct current with low consumption